

Integral Interiors

JOB DATA SHEET

Client: Care UK Plc
Project: Office & ophthalmology suite fit out
Location: NHS Treatment Centre, Gillingham
Designer: Care UK Plc

Care UK are a leading independent provider of health and social care services. Working in close partnership with Local Authorities and Primary Care Trusts, they provide care and support for older people, GP surgeries and treatment centres and also provide a range of specialist care and children's services. In Gillingham, Care UK operate one of their ten NHS Treatment Centres providing fast, same day or short stay surgery. They play a major role in helping reduce NHS waiting times.



As the programme was dictated by the ophthalmic treatments booked for one week after completion, no time was lost in starting on site. This was achieved by using Integral Interiors' supply chain, all of whom are used to working on a fast track basis. The work consisted of, in the first phase, the formation of a new office complete with a new a/c installation. This was complete within two weeks. Phase two consisted of partial demolition of existing offices and the construction of new treatment rooms, again including adaptations to the a/c installation, data and fire alarms. All work was carried out while the centre was open, therefore all works had to be carefully co-ordinated with the centre management to ensure no disruption to any of the treatments taking place.

Integral Interiors
Unit 2, Riverside Business Park
St Anne's Road
Bristol
BS4 4ED
T (0117) 972 0054
F (0117) 972 5960
E interiors@integral.co.uk
W www.integral.co.uk



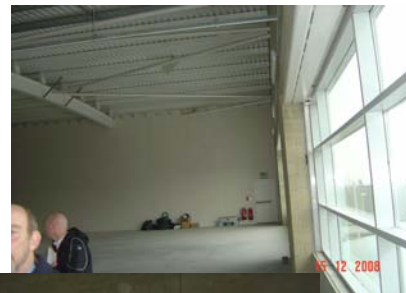
INTEGRAL



CARE UK



As part of Care UK's ongoing development they wanted to construct a new office in their vacant 1st floor area, thus enabling the release of valuable ground floor space to create an ophthalmology consulting and examination suite. After a fast track tender period Integral Interiors were selected to undertake the work, and started on site within 4 days of receiving the order.



In Partnership With:



INTEGRAL

Simon Kohn Furniture Ltd
3 Riverside Business Park,
St Anne's Road,
Bristol,
BS4 4ED.
Tel 0117 987 3202
Fax 0117 987 3204
E-mail enquiries@simonkohn.co.uk
www.simonkohn.co.uk

Integral Interiors - The Fit Out and Refurbishment Division of Integral UK Ltd